



MURUJUGA

Commercial Ltd

Capability Statement



Building our business, Empowering our People, Sustaining our Country

Introduction and company profile

Murujuga Commercial Limited (MCL) is a subsidiary of Murujuga Aboriginal Corporation (MAC) which works to investigate, pursue and operate commercial ventures for the purposes of providing benefits to the Murujuga community.

MCL is a public company limited by guarantee under the Corporations Act and registered as a charity under the Australian Charities and Non-for-profits Commission Act, in the form of a public benevolent institution.

MCL is in a start-up phase, and as such the focus is on the establishment of the business, the formation of a solid foundation for future business streams, and the creation of an investment/project pipeline aligned with strategic goals and objectives.

Our ultimate goal is to establish a diversified Aboriginal business with a portfolio of investments which ensure resilience in the face of economic and resource sector fluctuations.

We aim to maximise economic, social and environmental returns which will ensure social and economic independence for current and future generations of Murujuga people.

Our Vision and Mission

Our **Vision** is to be a commercial business founded on enduring Aboriginal culture and heritage, maximising value to Murujuga Aboriginal Corporation by transforming the lives of its stakeholders for today and the future.

This is in turn supported by our **Mission** of enabling economic self-determination for the Murujuga community through innovative and competitive commercial activities.

Our Business Principles

Respect for Aboriginal heritage, tradition and culture is core to our business

Our strategic advantage lies in our foundation on Aboriginal country, culture and heritage, the unique country entrusted to MAC and the ability to build strategic partnerships in support of business objectives.

The principles of sustainability apply to decision making, ensuring the maximisation of economic, social and environmental returns to stakeholders.

Our business growth is via equity participation in a mix of partnerships, joint ventures and acquisitions.

Priority is given to partnering with Murujuga member businesses where aligned with our strategic framework.

Core Business and Core Competencies

Five core business areas form the basis of the diversified business structure of MCL. These business areas are as follows:

1. Business services – currently our primary business offering
2. Tourism
3. Property Development and asset management
4. Aquaculture and Fisheries
5. New business and innovation - with a focus on energy and carbon

Our Core Business areas are supported by our Core Competencies of:

- Integrating Aboriginal Culture and Heritage with business opportunities
- Partnering and deal making
- Portfolio structuring, design and management
- Value based leadership and management.

Major client list

Currently our business partners are those partnering with us under the Burrup and Maitland Industrial Estates Agreement. This includes:

- Woodside and Bechtel
- Perdaman and Clough
- Rio Tinto
- Yara Fertiliser
- Schlumberger

Description of products and/or services

Wangarri Crane and Equipment Hire

In partnership with Boddingtons Crane Hire, our crane and equipment hire company, Wangarri Crane and Equipment Hire, can provide dry or wet hire of Cranes, Reach Stackers, Forklifts and Telehandlers of various sizes and specifications to all sections of Australian Industry. Based in Rockingham and with a footprint in Karratha we are ideally placed to service a wide geographic area.

Personnel transport (under development)

We are busy finalising a business which will provide services for the transport of employees and contractors to industrial facilities in the Karratha region.

Land Access


We acquire land for lease for laydown, staging areas and storage.

Civil services (under development)

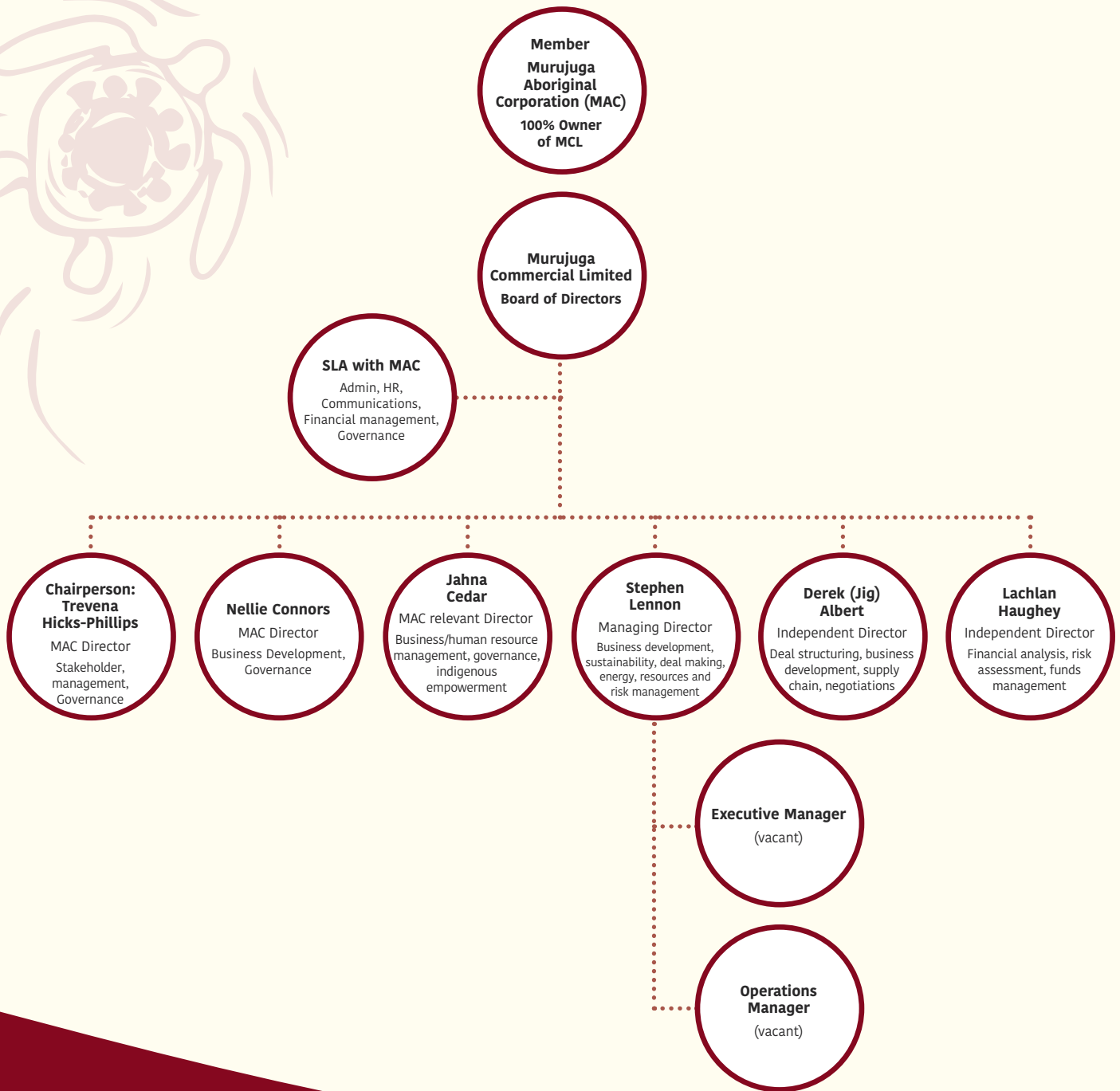
We are poised to provide a wide range of services in the civil construction, infrastructure maintenance and railroad sectors across the Pilbara region.

Facilities Management (under development)

We are poised to provide a wide range of services in the facilities management area.



Management and team profile



Murujuga Commercial Ltd (MCL)

Stephen Lennon Managing Director
0416 555 029 | contact@murujugacommercial.org.au

313 King Bay Road, Dampier WA 6713
PO Box 1544, Karratha WA 6714

murujugacommercial.org.au